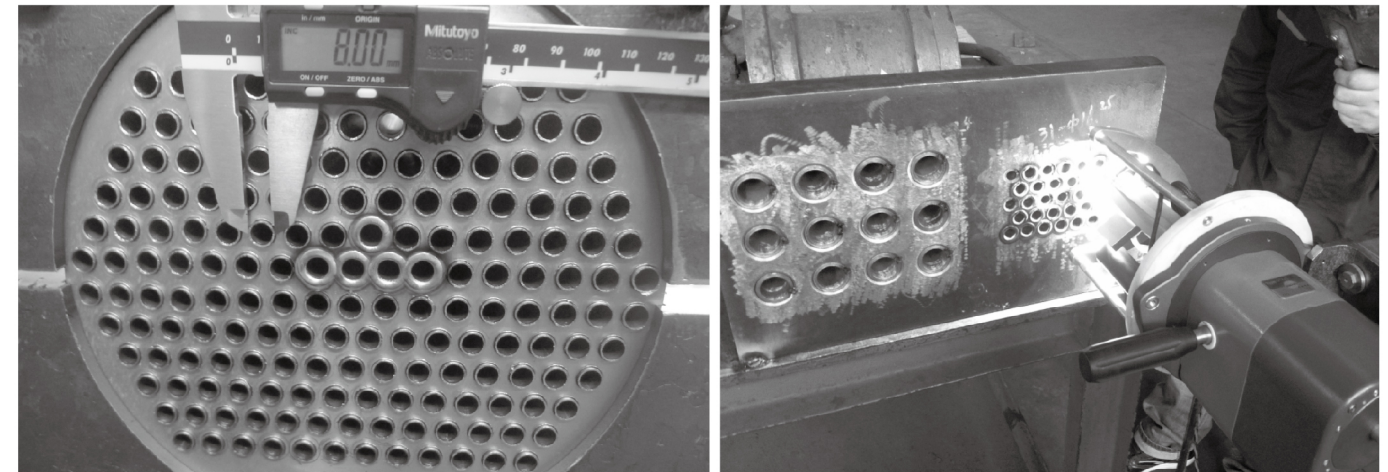
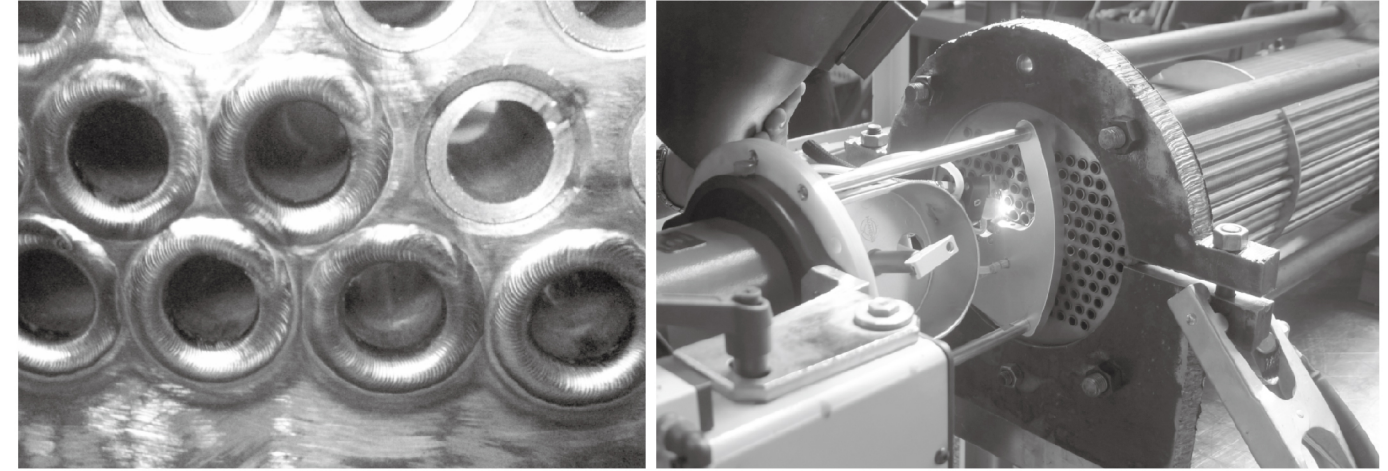


T8

Tube/Tube Sheet Orbital Weld Head

Summary

This welding head is one special designed TIG welding head for small diameter tube to tube-sheet, which is used for carbon steel, stainless steel tube to tube-sheet connection, mainly for protrusion tube, flush tube, tube retraction welding without wire feeding or with wire feeding. The standard small torch with additional gas cover to weld Titanium alloy or other material which need higher protection. It's compatible with Huaheng iOrbital5000 program-mable digital welding power source to apply in chemical, food, medicine, heat exchanger, power plant, military and nuclear industries etc.



Technical specification

Material	Carbon steel, stainless steel, titanium alloy(with cover)
Tube OD (mm)	Φ8 - Φ32 (3/8" - 1 1/4")
Connection	Retract tube, protrusion tube, flush tube
Rotation speed (rpm)	0.37 - 7.39
Arc adjusting distance (mm)	18
Max wire feeding speed (mm)	1800
Wire Diameter (mm)	Φ0.8
Protective gas	Ar
Cooling	Water
Cooling flow (ml/min)	≥300
Duty cycle	300A 60%
Weight (kg)	11(no cable)
Dimension (mm)	477 × 363 × 365

Features

- High-precision localizer, fast and accurate, suitable for small heat exchanger;
- Automatic AVC function, optional manual AVC;
- Standard water cooling TIG torch, easy to change and adjust the tungsten electrode;
- Wire feeding without twisting, integrated wire feeder with 1.0kg wire;
- Water, gas and electricity without twisting while rotation;
- Operation button on the weld head, convenient to operate.